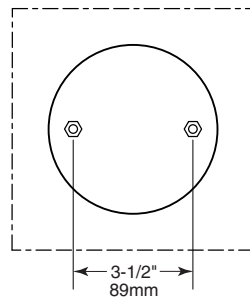
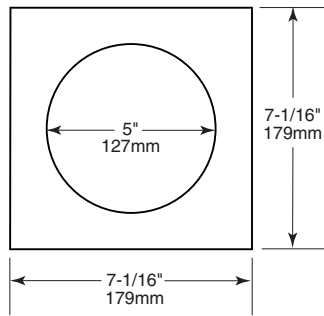
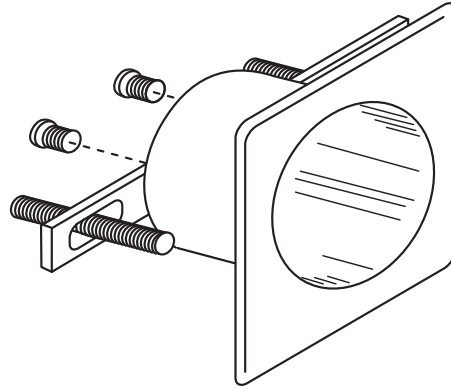
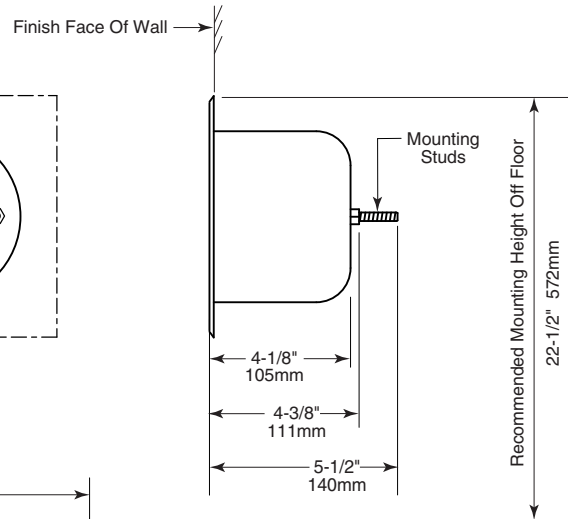
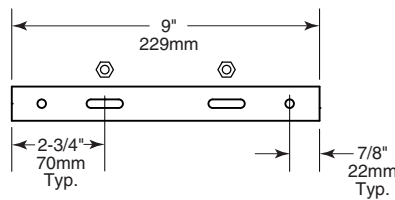


Date:

Project Name:



Rear View



Rough Wall Opening
 5-3/4" (146mm) wide
 5-3/4" (146mm) high
 4-1/8" (105mm) minimum
 recessed depth

CONSTRUCTION:

Fabricated of type 304 14-gauge (1.9mm) stainless steel. All welded construction with exposed surfaces having a #4 satin-finish. 5" (127mm) diameter and 4-1/8" (105mm) deep to accommodate standard toilet tissue roll. Flange is 7" (178mm) square. Stainless steel mounting hardware provided.

Maximum Security Rear-Mounted Recessed Toilet Paper Holder shall be Model MSA-1 of Gamco Commercial Restroom Accessories, A Division of Bobrick, One Gamco Place, Durant, OK